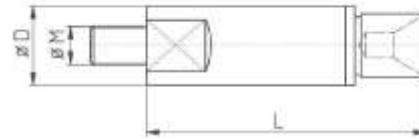


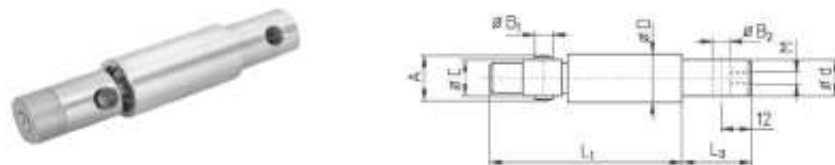
EMBOUT SIMPLE



Type	D	M	L
ETESB0450	4.5	M3.5	35
ETESB0550	5.5	M4	46
ETESB0700	7	M5	52
ETESB0750	7.5	M5	44
ETESB0800	8	M5	48
ETESB0850	8.5	M5	52
ETESB0850L	8.5	M5	73
ETESB1000	10	M6	49
ETESB1100	11	M6	49
ETESB1200	12	M6	49
ETESB1400	14	M10	80
ETESB1408	14	M8	80
ETESB1500	15	M10	80
ETESB1508	15	M8	80
ETESB1600	16	M10	80
ETESB1608	16	M8	80
ETESB2000	20	M10	80
ETESB2500	25	M12	108
ETESB2800	28	M12	108
ETESB3000	30	M12	108
ETESB3200	32	M12	108
ETESB3600	36	M12	108

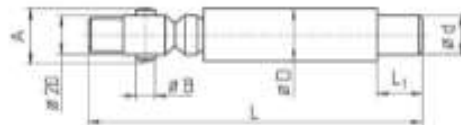
FMB / HAGENUK / AB TYPE ND15 TRAUB / EZ LONG SYMCO IEMCA


Référence	d	D	A	B	C	L1	L2	L3
ETSPHLD10IR	8	10	9.8	4	7	27	43	31
ETSPHLD105IR	8	10.5	9.8	4	7	27	43	31
ETSPHLD10H	8	10.3	9.8	4	7	27	43	31
ETSPHLD12H	8	12	11.8	4	8	27	43	31
ETSPHLD13H	8	13	11.8	4	8	27	43	31
ETSPHLD15H	12	15	14.8	6	11	26	44	31
ETSPHLD16H	12	16	15.8	6	11	26	44	31
ETSPHLD18	12	18	17.8	6	11	26	44	31
ETSPHLD20	17	20	19.8	8	14	39	47	31
ETSPHLD22	17	22	21.8	8	14	39	47	31
ETSPHLD23	17	23	21.8	8	14	44	47	28
ETSPHLD25	20	25	24.8	8	20	42	47	31
ETSPHLD28	20	28	24.8	8	20	42	47	31
ETSPHLD30	20	30	29.8	8	20	42	47	31
ETSPHLD32	20	32	31.8	8	20	42	47	30
ETSPHLD36	20	36	35.8	8	20	42	47	30
ETSPHLD42	20	42	41.8	8	20	42	47	30
ETSPHLD52	20	52	51.8	8	20	42	47	30

LNS


Référence	d	D	A	B1	B2	C	L1	L3	M
ETSPHL10LNS	8	10	10	4	4	7	67	30	M4
ETSPHL12LNS	8	12	12	4	4	8	69	30	-
ETSPHL15LNS	12	15	15	6	6	11	67	30	M5
ETSPHL18LNS	12	18	18	6	6	11	70	30	-
ETSPHL20LNS	17	20	20	8	8	14	81	30	M8
ETSPHL25LNS	20	25	25	8	8	20	85.5	30	M8
ETSPHL36LNS	30	36	36	8	-	20	158	40	-
ETSPHL50LNS	42	50	-	-	-	20	158	50	-

TORNOS



Référence	d	D	A	B	L1	L
ETSPHLTD25	20	25	24.8	8	40	197
ETSPHLTD28	25	28	25.8	8	40	197
ETSPHLTD30	25	30	25.8	8	40	197
ETSPHLTD32	25	32	31	8	40	197
ETSPHLTD34	30	34	31	8	40	197
ETSPHLTD36	30	36	35	8	40	207
ETSPHLTD38	30	38	-	-	40	207
ETSPHLTD40	33	40	-	-	50	207
ETSPHLTD42	33	42	-	-	50	207
ETSPHLTD45	33	45	-	-	50	207
ETSPHLTD50	42	50	-	-	50	207
ETSPHLTD60	51	60	-	-	75	232
ETSPHLTD63	51	63	-	-	75	232
ETSPHLTD65	51	65	-	-	75	232
ETSPHLTD70	51	70	-	-	-	-
ETSPHLTD80	51	80	-	-	-	-

TORNOS ROBOBAR

Référence	d	D	A	B	L1	L
ETSPHLTR32	22	32	31	8	30	192
ETSPHLTR36	25	36	35	8	30	192

GAUTHIER / IEMCA / LNC

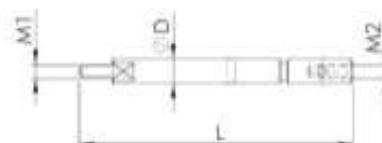


Fig.1

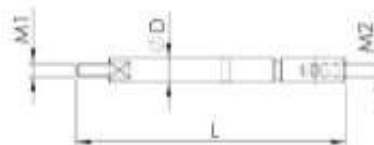


Fig.2

Référence	d	D	A	B	C	L1	L2	L3	Fig.
ETSPHLD05R	M3	5.5	-	-	M4	7	78	8	1
ETSPHLD07R	M5	7.5	-	-	M5	7	78	16	1
ETSPHLD10R	7	10.5	9.8	4	7	27	73	16	2
ETSPHLD12R	8	12	11.8	4	8	28	72	16	2
ETSPHLD16R	10	16	15.5	6	11	26	116	16	2
ETSPHLD18R	10	18	17.8	6	11	28	116	16	2
ETSPHLD21R	14	20.5	19.8	8	14	40	110	20	2
ETSPHLD25R	20	25	24.8	8	20	42	117	22	2
ETSPHLD26R	20	26	24.8	8	20	43	114	22	2

TORNOS CADDIE AS 14 / SAS16


Référence	D	M1	M2	L
ETVO5110	8.5	M5 gauche	M5 gauche	62
ETVO5111	9.5	M6 gauche	M6 gauche	72
ETVO5112	10.5	M6 gauche	M6 gauche	72
ETVO5113	12.5	M6 gauche	M6 gauche	72
ETVO5114	15	M7 gauche	M6 gauche	92
ETVO5115	16.5	M8 gauche	M8 gauche	92
ETVO5116	17	M8 gauche	M8 gauche	92

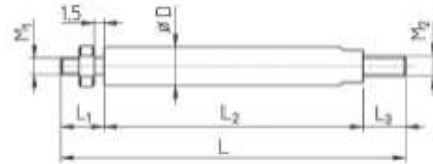
BECHLER


Référence	D	M1	M2	L
ETVO6140	4.5	M3	M2.5	37.5
ETVO6141	5	M3.5	M3	58.5
ETVO6142	5.5	M4	M3.5	37.5



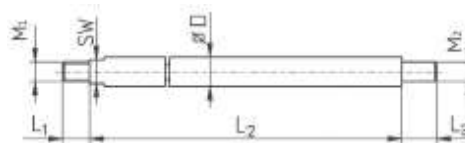
Référence	D	M1	M2	L
ETVO6143	7	M5	M4	38.5
ETVO6144	7	M5	M4	61
ETVO6145	10	M6	M5	59
ETVO6146	10	M6	M5	75
ETVO6147	12	M8 / M6	M5	64
ETVO6148	12	M8 / M6	M5	94
ETVO6151	13	M8 / M6	M6	65
ETVO6152	13	M8 / M6	M6	94
ETVO6153	16	M12	M6	84
ETVO6154	20	M16	M8x1	84

TORNOS



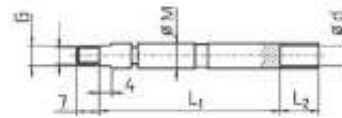
Référence	D	M1	M2	L1	L2	L3	L
ERT0450	4.5	M3	M3	5	-	-	62
ERT0550	5.5	M3	M3	8	55	-	63
ERT0700	7	M4	M5	12	42	10	64
ERT0750	7.5	M4	M5	11.5	42	10	63
ERT0850	8.5	M5	M5	12	41.5	10	63.5
ERT1050	10.5	M6	M6	14	45	11	70
ERT1200	12	M6	M6	-	-	-	51
ERT1300	13	M6	M6	-	-	-	51
ERT1500	15	M7	M6	-	-	-	70
ERT1600	16	M7	M8	-	-	-	72
ERT2000	20	M7	M8	-	-	-	72

FMB



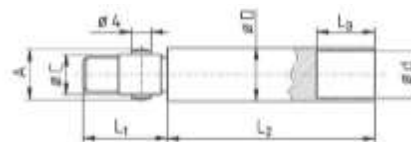
Référence	D	M1	M2	SW	L1	L2	L3	Machine
ETSPHLD05GS	5.0	M4	M4	4	7	73	11	GAUTHIER/IEMCA
ETSPHLD05G	5.5	M4	M4	4	7	73	11	GAUTHIER/IEMCA
ETSPHLD07GS	7.0	M5	M5	6	7	79	11	GAUTHIER
ETSPHLD07G	7.5	M5	M5	6	7	79	11	GAUTHIER
ETSPHLD07LNS	7.0	M4	M5	6	8	115	11	LNS Mini Sp
ETSPHLD07LNS	7.5	M4	M5	6	8	115	11	LNS Mini Sp

TRAUB / FMB



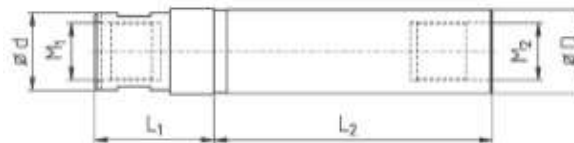
Référence	D	M	G	L1	L2	d
ETSPHLD05T	5	M4	4	56	12	4.5
ETSPHLD07T	7	M5	6	59	15	6.5

TRAUB



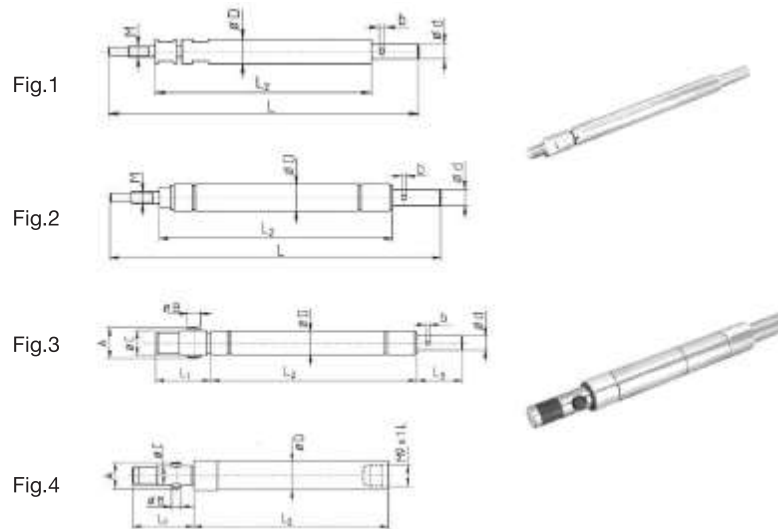
Référence	D	A	C	d	L1	L2	L3
ETSPHLD10T	10	9.9	7	9	24	61	18
ETSPHLD12T	12	11.9	8	11	24	61.5	18

IEMCA



Référence	D	d	L1	L2	M1	M2
ETSPHLDI25	25	23	40	81	M17x1	M17x1
ETSPHLDI30	30	30	49	91	M25x1.5	M20x1
ETSPHLDI40	40	45	51	114	M25x1.5	030

IEMCA / BOSS

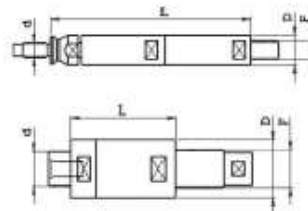
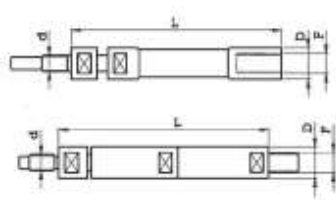


Satandard IEMCA embout tournant vissé

Référence	D	d	L2	L	M	b	Fig.
ETSPHL12	12	8	109	172	M7x0.75	3	1
ETSPHL15	15	12	132.5	195	M8x1	4	2
ETSPHL16	16	12	132.5	195	M8x1	4	2
ETSPHL18	18	12	132.5	195	M8x1	4	2
ETSPHL20	20	14	132.5	210	M10x1	-	2
ETSPHL23	23	14	132.5	210	M10x1	4	2

Embout tournant goupillé

Référence	D	d	L1	L2	L3	A	B	C	b	Fig.
ETSPHL12IE	12	8	27	113	30	12	4	8	3	3
ETSPHL12IE-S	12	-	26	83	-	12	4	8	-	4
ETSPHL14IE	15	12	26	127	35	15	6	11	4	3
ETSPHL16IE	16	12	26	127	35	16	6	11	4	3
ETSPHL18IE	18	12	26	127	35	18	6	11	4	3
ETSPHL20IE	20	14	37	125	33	20	8	14	-	3

IEMCA / CUCCHI

IEMCA filetage à droite

Référence	D	L	F	d	Fig.
ET516.007	7.5	126	M6x0.75	M5x0.5	1
ET516.010	10	113	M8x1	M6x0.75	1
ET516.012	12	116	M10x1	M7x0.75	1
ET516.015	15	121	M12x1	M8x1	1
ET516.020	20	133	M14x1.5	M10x1	1
ET516.025	25	133	M14x1.5	M10x1	1
ET516.030	30	135	M14x1.5	M10x1	1

CUCCHI filetage à droite

Référence	D	L	F	d	Fig.
ET517.010	10	107	M7x1	M6x0.75	2
ET517.012	12	107	M8x1.25	M7x0.75	2
ET517.014	14	107	M10x1.5	M8x1	2
ET517.016	16	107	M10x1.5	M8x1	2
ET517.019	19	118	M12x1.75	M10x1	2
ET517.025	25	118	M20x1.5	M14x1	2
ET517.030	30	123	M24x1.5	M18x1.5	2
ET517.040	40	61	M28x1.5	M25x1.5	4

CUCCHI filetage à gauche

Référence	D	L	F	d	Fig.
ET517.120	19	100	M17x1	M10x1	2
ET517.120P	19	100	M17x1	M14x1.5	2
ET517.120S	19	105	M17x1	M10x1	3
ET517.125	24	100	M20x1.5	M14x1	2
ET517.125P	24	100	M20x1.5	M20x1.5	2
ET517.125S	24	105	M20x1.5	M14x1	3
ET517.130	29.3	100	M26x1.5	M18x1.5	2
ET517.130S	29.3	100	M26x1.5	M18x1.5	3
ET517.130P	29.3	100	M26x1.5	M26x1.5	2
ET517.135	35	100	M30x1.5	M18x1.5	2
ET517.135P	35	100	M30x1.5	M30x1.5	2
ET517.138	38	83	M30x1.5	M25x1.5	2
ET517.138P	38	83	M30x1.5	M30x1.5	2
ET517.145	45	100	M36x1.5	M30x1.5	2
ET517.145P	45	100	M36x1.5	M36x1.5	2
ET517.148	48	100	M36x1.5	M30x1.5	2
ET517.148P	48	100	M36x1.5	M36x1.5	2
ET517.160	60	113	M50x1.5	M30x1.5	2