



MARKING SYSTEMS

TRADITIONAL

# TECHNOLOGIES

IMPACT, ROLL MARKING, ROLL MARKING, HOT FOIL, CHEM-ETCH MACHINE



1940 | PRESENT DAY



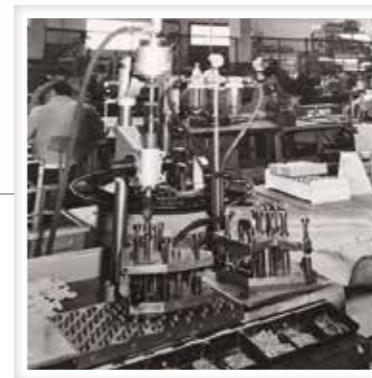
**Automator provides quality designs, world class production and sales of industrial marking machines and systems worldwide since 1940.** In 2020, Automator celebrated its 80th year in business. This means 80 years of knowledge in International Industrial Production in all market segments and all product marking applications! 80 years in satisfying customers with excellent pre and after-sales support! 80 years in Research & Development for machine innovation. With emphasis on inventing new technologies, improving existing technologies, and contributing year after year to push the whole industrial part marking sector towards new goals and new horizons.

Since its early years, **Automator** has always focused on industrial marking. Always imagining, planning and providing the most advanced technologies for this industry.

## AUTOMATOR: BRINGING THE FUTURE TO THE INDUSTRIAL MARKING SEGMENT



1940 - 1950  
MECHANICAL MACHINES



1960 - 1970  
PNEUMATIC AND ELECTRIC-PNEUMATIC IMPACT MACHINES



1980  
DOT PEEN ELECTRONIC MARKERS



2000  
LASER MARKER

## How can one of our customers benefit from our 80 years of experience?

- 80 years in business means we have an extensive **KNOWLEDGE** of marking applications in all market segments and all related industries.
- 80 years in business means a huge **EXPERTISE** in pre-sales activities, especially for understanding customer needs and the ability to help qualify the solution best suited for the job.
- 80 years in business means that all Automator products are the result of **CONTINUOUS IMPROVEMENTS**, technological stratification, upgrades and innovation.
- 80 years in business means a huge **EXPERTISE** in after-sales activities, such as education and support.
- 80 years in business means **STABILITY!** Automator will always be beside you, helping you in all your marking needs!

## Our technologies

**Automator Marking Systems** provides all industrial marking technologies, Traditional mechanical machines, pneumatic or electric-pneumatic Impact, Roll Marking, Hot Marking, and state-of-the-art technologies for Laser, Dot Peen and Scribe Marking.



LASER MARKING



DOT PEEN MARKING



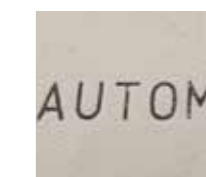
IMPACT MARKING



SCRIBE MARKING



ROLL MARKING



HOT FOIL MARKING



CHEM ETCH MARKING

# MB15, MB20, MB32

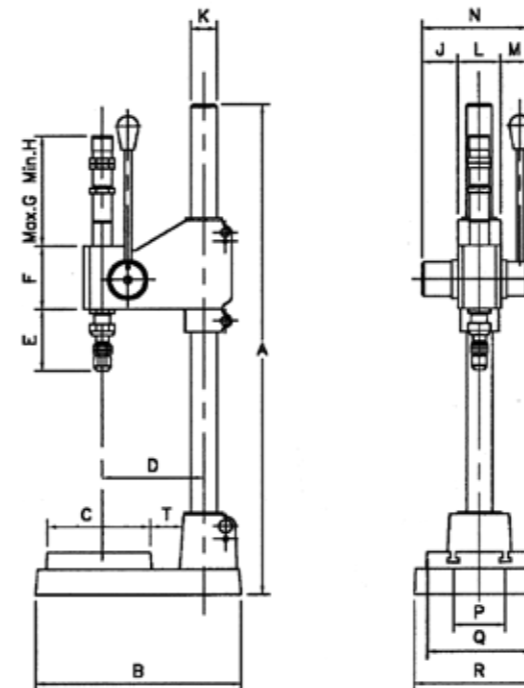
## EASY MARKING, IN ONE SINGLE MOVEMENT!

Ideal for deep and fast markings of numbers, texts and logos.  
Uniform marking depth even on pieces of different heights.

The impact system prevent any deformation of the material  
Suitable also for machinings, such as rivetting, inserting, caulking.



	MB15	MB20	MB32
Dimension (mm)	132x450x210	205x650x309	280x850x443
Adjustable power (kg / kN)	500 / 5	3000 / 30	6500 / 65
Item maximum height (mm)	260	330	370
Weight (kg)	10	33	99
Cava a T (mm)	6	10	12
Shank diameter (mm)	8x32	10x38	16x48
Rack stroke (mm)	30	60	100
Tool-holder stroke (mm)	8	18	22
Usable stroke (mm)	22	42	78



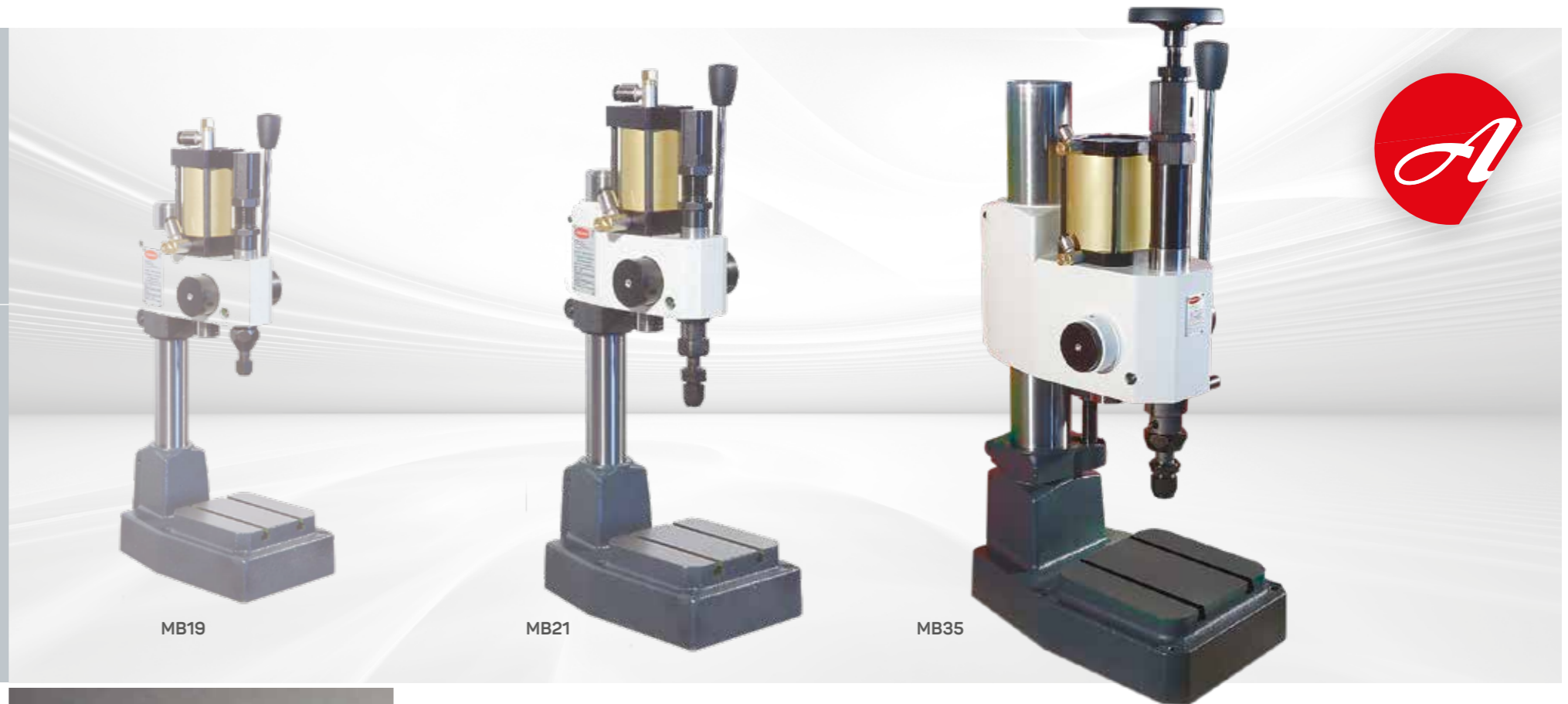
Measures in mm

	MB15	MB20	MB32
A	450	650	850
B	210	309	443
C	100	160	230
D	112	160	230
E	50	110	155
F	60	102	180
G	130	180	360
H	95	118	325
K	30	42	70
J	29	57,5	66,5
L	48	66	106
M	30	43,5	62
N	110	166	234
P	47	75	113
Q	101	160	220
R	132	205	280
T	40	50	70

# MB19, MB21, MB35

## SENSIBILITY, PRECISION AND SPEED!

Pneumatic actuation of the marking impact mechanism by a double effect cylinder. Ideal for deep and fast markings of numbers, texts and logos.  
Uniform marking depth even on pieces of different heights.  
The impact system prevent any deformation of the material.  
Suitable also for machinings, such as rivetting, inserting, caulking.  
Available accessories, such as cliches, types and numbering heads for custom markings.

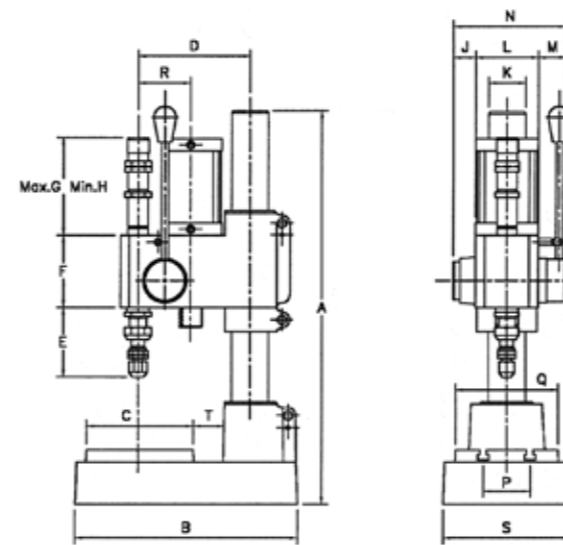


MB19

MB21

MB35

	MB19	MB21	MB35
Dimension (mm)	138x138x225	208x600x355	300x840x505
Adjustable power (kg / kN)	600 / 6	3500 / 35	7500 / 75
Item maximum height (mm)	175	270	300
Weight (kg)	14,5	53	162
T Slot (mm)	6	10	12
Shank diameter (mm)	8x32	10x38	16x48
Rack stroke (mm)	30	60	85
Tool-holder stroke (mm)	8	18	22
Usable stroke (mm)	22	42	63
Max air pressure (bar)	4	6	6
Air supply (gas)	1/8	1/4	1/4



Measures in mm

	MB19	MB21	MB35
A	380	600	840
B	225	355	505
C	112	176	240
D	112	180	260
E	45	120	160
F	65	118	182
G	120	160	355
H	90	110	270
K	36	60	100
J	20,5	37	44
L	56	102	170
M	34	44	54
N	110,5	183	270,5
P	49	80	113
Q	112	168	243
R	55	84	112
S	138	208	300
T	29	45	70

# COMPACT VP

## PERFECT FOR INTEGRATION!

Ideal for deep and fast markings of numbers, texts and logos.  
 Uniform marking depth even on pieces of different heights.  
 Pneumatic activation by a piston.  
 Installation at any angle and with limit switches.  
 The impact system prevent any deformation of the material.  
 Suitable also for machinings, such as rivetting, inserting, caulking.



MB19VPN

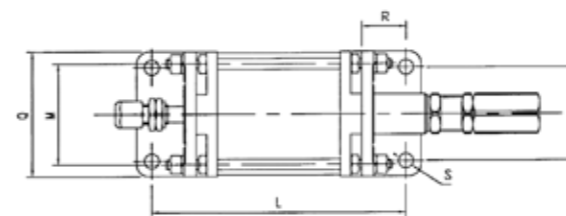
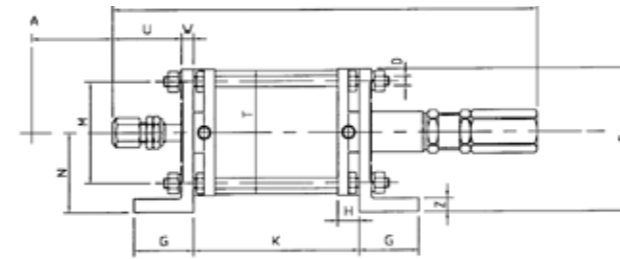


MB21VPN



MB35VPN

	MB19VPN	MB21VP	MB35VP
Dimension (mm)	235x65x78	395x115x130	670x184x217
Adjustable power (kg / kN)	600 / 6	3500 / 35	7500 / 75
Weight (kg)	2	10	38
Shank diameter (mm)	8x32	10x38	16x48
Tool-holder stroke (mm)	8	18	25
Rack stroke (mm)	24	49	85
Piston stroke (mm)	32	67	110
Air pressure (bar)	4	6	6
Air supply (gas)	1/8	1/4	3/8



	MB19VPN	MB21VP	MB35VP
A	32	55	90
C	235	395	670
D	M8	M10	M16
E	78	130	217
G	45	55	87
H	14	20	32
K	88	153	234
L	158	238	364
M	45	90	140
N	45	72,5	130
P	45	90	140
Q	65	115	184
R	35	42,5	65
S	11	14	17
T	60	105	170
U	35	64	110
W	10	12	27
Z	10	12	20

Measures in mm

# UNITÀ

## MARKING MADE EASY!

Ideal for deep and fast markings of numbers, texts and logos.  
 Uniform marking depth even on pieces of different heights.  
 Installation at any angle.  
 The impact system prevent any deformation of the material.  
 Suitable also for machinings, such as rivetting, inserting, caulking.  
 Available accessories, such as cliches, types and numbering heads for custom markings.



MB 15/19

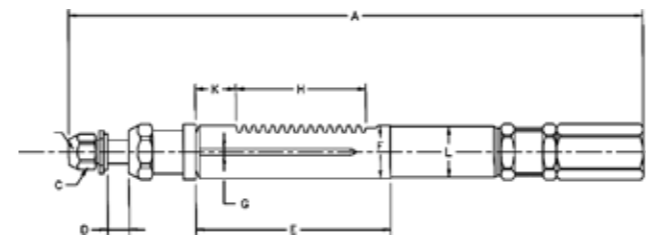
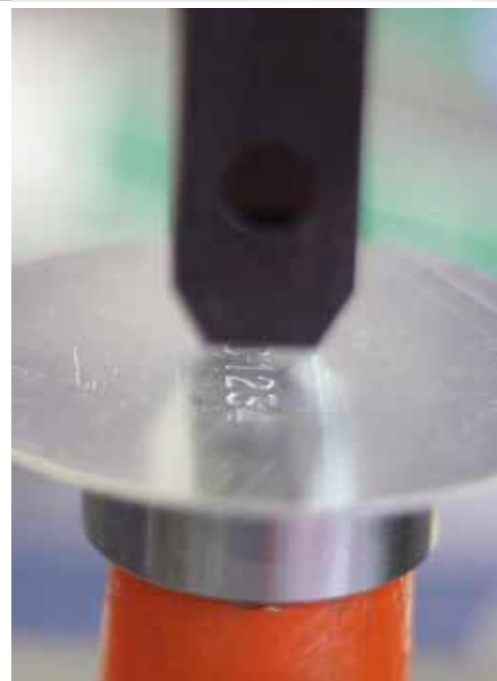


MB 20/21



MB 32/35

	MB15/19	MB20/21	MB32/35
Length (mm)	240	392	690
Adjustable power (kg / kN)	500 / 5	3000 / 30	6500 / 65
Weight (kg)	0,6	2,1	10,2
Shank diameter (mm)	8x32	10x38	16x48
Rack stroke (mm)	30	60	100
Tool-holder stroke (mm)	8	18	22
Usable stroke (mm)	22	42	78



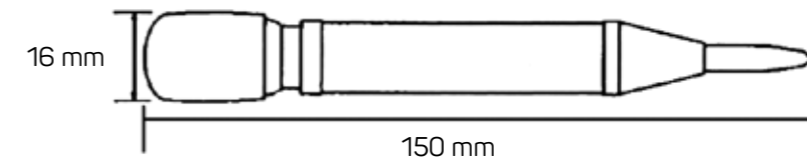
Measures in mm

	MB15/19	MB20/21	MB32/35
A	240	392	690
B	6-8	10	16
C	13-17	24	36
D	8	17	22
E	80	137	224
F	25	36	60
G	3	6	7
H	51	94,2	131,9
K	16	21	61
J	1,25	2	2
L	24	34	58

# MICRO

## THE SMALLEST MARKING SYSTEM IN THE WORLD!

Actuated by the simple pressing of the palm.  
 Maximum adjustable power up to 50 kg.  
 Center punch for creating a dimple in any material.  
 Provided with a tip for tracing and cheselling.  
 Excellent for marking one standard letter, number or symbol, in 2,5 mm character height or in 3 mm upon request.



	1	2	3	4	5	6	7	8
A	□	♥	△	∞	♠	○	△	∑
B	⊕	⊞	⊗	⊘	⊙	⊚	⊛	⊜
C	⊝	⊞	⊟	⊠	⊡	⊢	⊣	⊤
D	⊥	♠	♣	♠	♠	♠	⊕	⊙
E	⊗	⊘	⊙	⊚	⊛	⊜	⊝	⊞
F	⊟	⊠	⊡	⊢	⊣	⊤	⊥	⊦
G	⊧	⊨	⊩	⊪	⊫	⊬	⊭	⊮

# MB20E, MB21E, MB21EU

## IDEAL TO MARK FABRICS, PLASTICS AND WOOD!

Manual or pneumatic actuation of the rack.  
Equipped with lever to move the hot press mechanism.  
Equipped with automatic ribbon advance device.  
Equipped with thermostat to adjust the temperature in relation with the material and the marking time. Perfect for dry marking and colored marking with a ribbon between the marking head and the surface to be marked. Available accessories, such as clichés, types and numbering heads for custom markings.

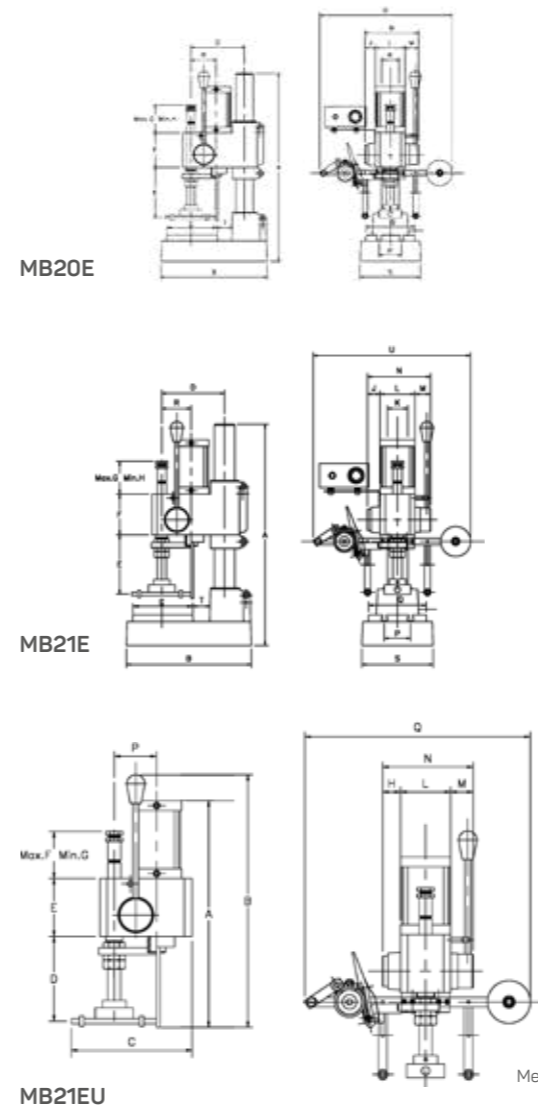


MB21E

MB21EU

MB20E

	MB20E	MB21E	MB21EU
Dimension (mm)	205x650x309	208x600x355	435x250x475
Adjustable power (kg / kN)	50 / 0,5	150 / 1,5	150 / 1,5
Item maximum height (mm) / Hithout heating block	275 385	206 318	
Cava a T (mm)	10	10	
Weight (kg)	38,5	58	27,5
Shank diameter (mm)	dia 27	dia 27	dia 27
Rack stroke (mm)	65	67	67
Usable stroke (mm)	65	67	67



MB20E

MB21E

MB21EU

Measures in mm

	MB20E	MB21E	MB21EU
A	650	600	435
B	309	355	355
C	160	176	250
D	160	180	-
D1	-	-	177
D2	-	-	65
E	-	-	115
E1	60	177	-
E2	170	65	-
F	102	118	150
G	85	150	110
H	55	110	40
K	42	60	-
J	57,5	37	-
L	66	102	100
M	42,5	44	44
N	166	183	184
P	75	80	84
Q	160	168	475
R	205	84	-
S	205	208	-
T	45	50	-
U	50	475	-



# MB - S

## VERY PRECISE FOR SMALL JOBS!

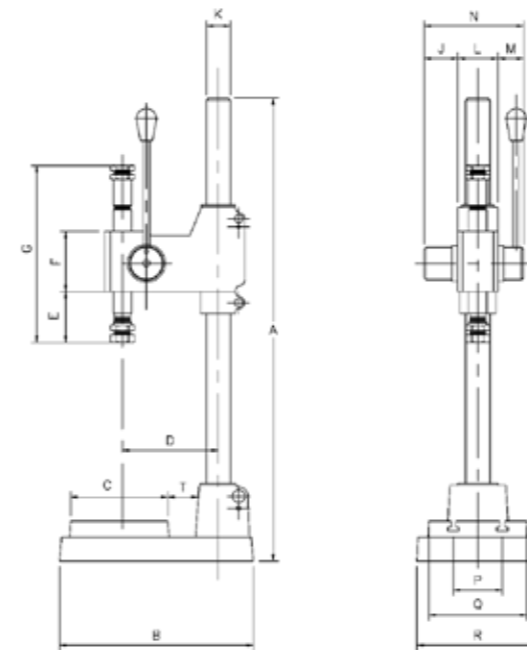
### Manual rack activation presses.

Ideal for riveting, inserting, bending, caulking.  
Manual activation of the rack by a lever.

Maximum sensitivity and precision with strict rack adjustment.



	MB15S	MB20S	MB32S
Dimension (mm)	132x450x210	205x750x309	280x850x443
Adjustable power (kg / kN)	50/0,5	70/0,7	90/0,9
Item maximum height (mm)	265	385	460
Weight (kg)	10	33	99
Cava a T (mm)	6	10	12
Shank diameter (mm)	dia 13	dia 27	dia 27
Rack stroke (mm)	27	65	100
Usable stroke (mm)	27	65	100



Measures in mm

	MB15S	MB20S	MB32S
A	450	750	850
B	210	309	443
C	100	160	220
D	112	160	230
E	40	60	60
F	59	102	180
G	155	250	430
K	30	42	70
J	29	57,5	66,5
L	48	66	106
M	32	42,5	61,5
N	109	166	234
P	50	80	120
Q	100	160	220
R	132	205	280
T	38	45	70

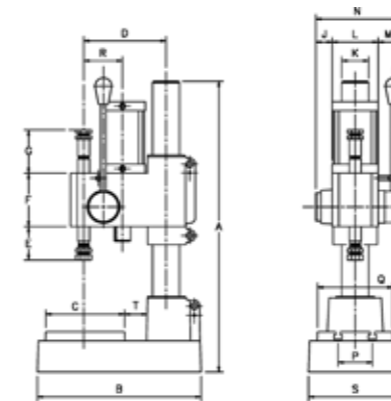
# MB - P

## FORCE AND SENSIBILITY!

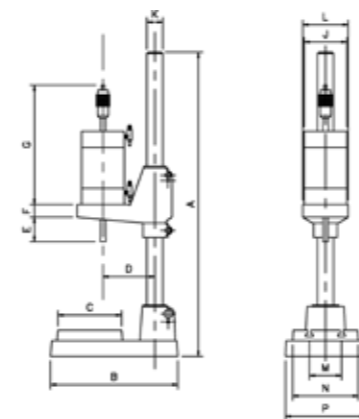
**Impact mechanism for integration.** Ideal for getting a fast and deep marking of logos, texts and numbers. Pneumatic actuation of the rack through a double effect piston. Installation at any angle. Maximum sensitivity and precision with strict rack adjustment. Bankholder effect to prevent any deformation of the material. Same marking depth on items of different heights. Many accessories available, such as clichè, types, type holders, numbering heads to personalize the marking. Suitable also for machining operators for pressing, rivetting, inserting, bending and caulking.



	MB19P	MB21P	MB35P
Dimension (mm)	138x350x225	208x600x355	300x800x505
Adjustable power (kg / kN)	100/1	250/2,5	450/4,5
Item maximum height (mm)	175	318	380
Weight (kg)	14,5	53	162
Cava a T (mm)	6	10	12
Shank diameter (mm)	dia 13	dia 27	dia 27
Rack stroke (mm)	22	67	80
Usable stroke (mm)	22	67	80
Maximum air pressure (bar)	4	6	6
Air supply (gas)	1/8	1/4	1/4



MB19P-21P-35P



MB125P

Measures in mm

	MB19P	MB21P	MB35P
A	350	600	800
B	225	355	505
C	110	176	242
D	112	180	268
E	40	65	67
F	65	118	172
G	45	110	175
K	36	60	100
J	20,5	37	44
L	56	102	170
M	34	44	56,5
N	110,5	183	274,5
P	46	80	113
Q	110	168	242
R	55	84	112
S	138	208	300
T	27	50	72

# MB41

## ROLL MARKING MACHINES FOR SMALL DIAMETERS

Ideal for marking small diameters, from 8 to 65mm.  
Manual or electric activation of the rack.

Double rolls support or with central pivot for marking cables.  
Standard accessories complete the range of roll machines for marking small diameters; from types and cliché to adjustable supports and supports for cave objects.

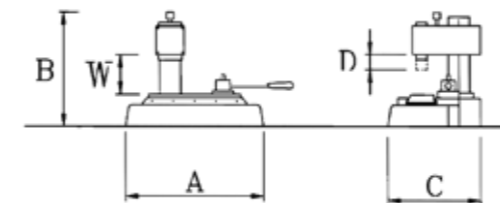


MB41E

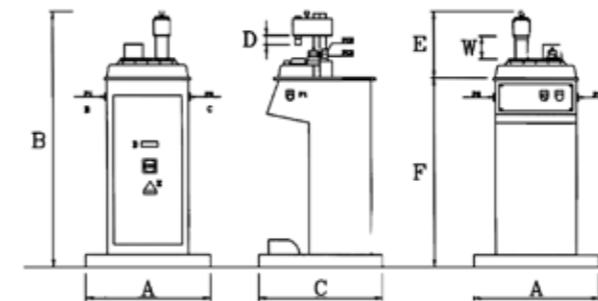


MB41N

	MB41N	MB41E
Dimension (mm)	295x300x240	600x1090x600
Bank		
Motor power (kw / V)		0,18/380
Motor		380 trif. 50 Hz 110 mono 60 Hz
Weight (kg)	35	110
Maximum diameter (mm)	65	65
Stroke (mm)	120	120



MB41N



MB41E

Measures in mm

	MB41N	MB41E
A	355	600
B	255	1090
C	245	600
D	37	30
E	-	300
F	-	760
G	-	-
H	-	-
I	-	-
L	-	-
M	-	-
N	-	-
O	-	-
P	-	-
X	-	-
Y	-	-
Z	-	-
W	135	135

# MB71

## DEEP AND FAST MARKING

Roll marking machines for medium diameters.  
Perfect for marking diameters up to 110mm.

Manual, electric or electro-pneumatic models.  
Double rolls support or with central pivot for marking cables.  
Many standard accessories both for the marking heads - numberings, clichè, interchangeable types - and for the supports - for cave or round pieces..

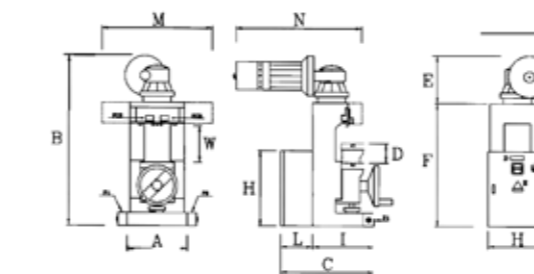


MB71E

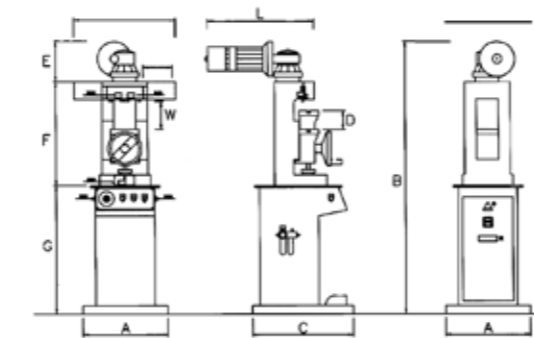
MB71EP

MB71N

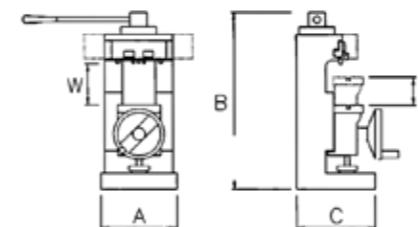
	MB71N	MB71E	MB71EP
Dimension (mm)	340x830x310	360x1020x500	600x1730x600
Bank			.
Motor power (kw / V)		0,55/380	0,55/380
Motor		380 trif. 50 Hz 110 mono 60 Hz	380 trif. 50 Hz 110 mono 60 Hz
Weight (kg)	126	138	230
Maximum diameter (mm)	110	110	110
Stroke (mm)	180	180	180
Cava a T (mm)	10	10	10
Maximum air pressure (bar)			6-8
Pneumatic bank			.



MB71E



MB71EP



MB71N

Measures in mm

	MB71E	MB71EP	MB71N
A	340	340	600
B	830	1020	1730
C	310	500	600
D	110	110	230
E	-	240	177
F	-	730	65
G	-	350	115
H	-	450	-
I	-	310	480
L	-	190	560
M	-	480	-
N	-	560	-
O	-	-	-
P	-	-	-
X	-	-	-
Y	-	-	-
Z	-	-	-
W	225	225	84

# MB71U

## VERY EASY FOR INTEGRATION

### Roll marking unit.

Especially designed for integration in production lines and transfers MB71UE rolling marking electric unit has a motor and 2 endswitch for running the slide of 180 mm stroke.

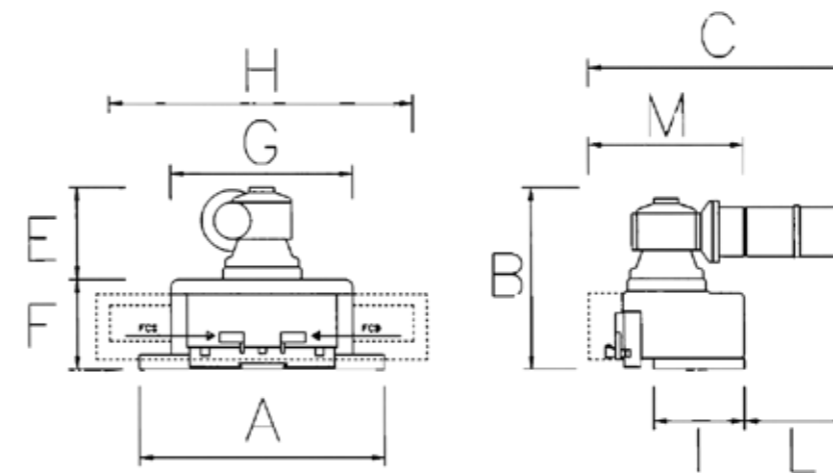
Many standard accessories available, such as types, clichè and numbering heads, to personalize the marking.



MB71U

	MB71U
Dimension (mm)	400x450x560
Motor power (kw / V)	0,55/380
Motor	380 trif. 50 Hz 110 mono 60 Hz
Weight (kg)	50
Stroke (mm)	180

	MB71U
B	225
C	110
D	112
E	40
F	65
G	45
H	36
I	20,5
L	56
M	34



Measures in mm

# MB71CE

## UP TO 80 MM DIAMETERS!

### Marking in continuous.

The electric model MB71CE is particularly suitable for continuous marking on bars and tubes, up to 80mm maximum, with a rate of 12mt /minute with 2 rolls.

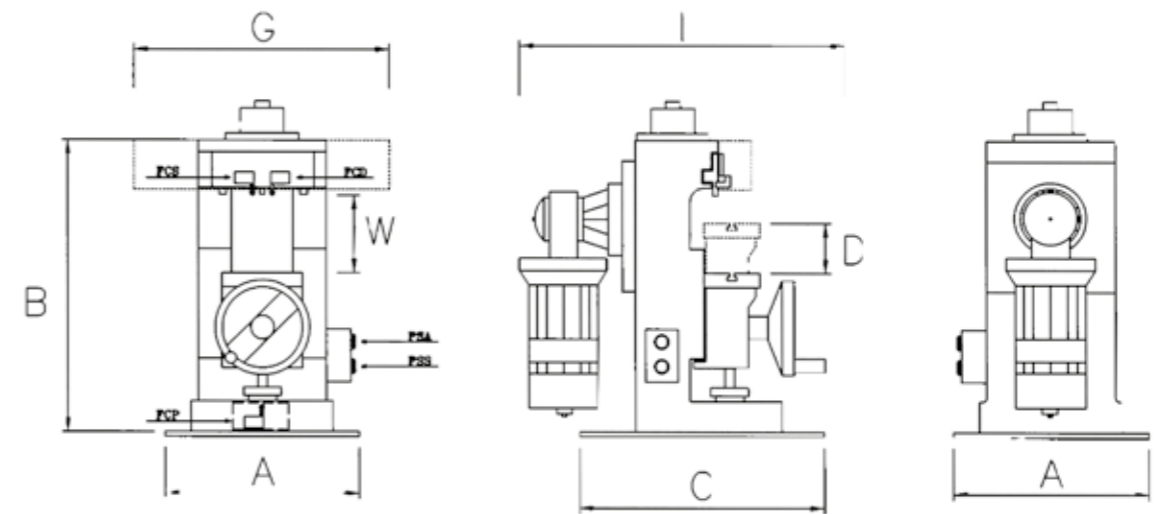
An engraved die or interchangeable types gear the exagons, pulling it through the marking.

Engine: motorgear 380 triphase 50 hz. Standard accessories complete the machine, being so strong, easy and cost effective.



MB71CE

	MB71CE
Dimension (mm)	340x830x310
Motor power (kw / V)	0,55/380
Motor	380 trif. 50 Hz 110 mono 60 Hz
Weight (kg)	155
Cava a T (mm)	10



	MB71CE
A	350
B	225
C	110
D	112
G	40
I	65
W	45

Measures in mm

# MB76

## FOR BIG AND HEAVY COMPONENTS!

**Roll marking machines for big diameters.**  
 Perfect marking of diameters up to 650mm.  
 Vertical model available in manual, electric or electro-pneumatic.  
 90° models available in electric or electro-pneumatic.

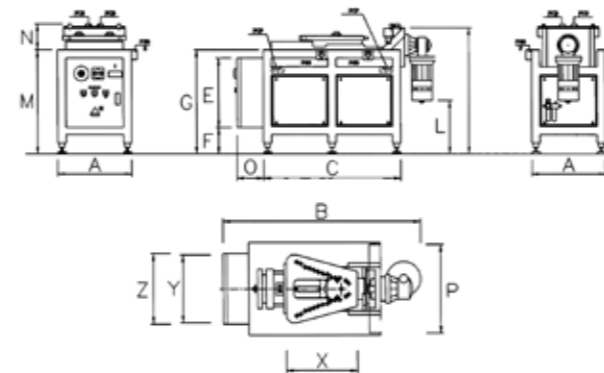
Many accessories available, such as clichè, types, type-holders, to personalize the marking.



MB76EPV

MB76EP90°

	MB76EPV	MB76EP90°
Dimension (mm)	730x1785x650	530x1170x1000
Motor power (kw / V)	0,55/380	0,55/380
Motor	380 trif. 50 Hz 110 mono 60 Hz	380 trif. 50 Hz 110 mono 60 Hz
Weight (kg)	300	360
Maximum diameter (mm)	650	-
Stroke (mm)	290	290
Air pressure (bar)	6-8	6-8
Pneumatic stroke (mm)	16	16



	MB76EPV	MB76EP90°
A	730	530
B	1785	1170
C	650	1000
D	280	-
E	685	500
F	820	190
G	-	750
H	480	-
I	560	925
L	180	380
M	-	750
N	-	190
O	-	190
P	-	480
X	-	430
Y	-	350
Z	-	440

Measures in mm

# TYPES

## FOR IMPACT, HOT AND ROLL MARKING

Steel types of high quality, in different heights, available singles or in boxes for impact, hot or rolling.



SHARPENED  
EDGE



HOT



LOW CAPITAL

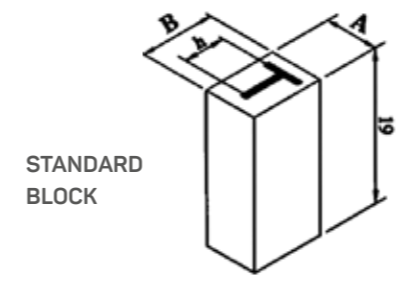


NUCLEAR

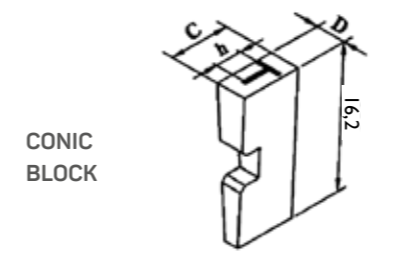


h (mm)	1	1,5	2	2,5	3	4	5	6	8	10	12
A sharp	*	*	*	*	*	*	*	*	*	*	*
A Hot	*	*	*	*	*	*	*	*	*	*	*
Lowercase	*		*		*						
A Dots					*	*	*				
Conic			*	*	*	*					
Nuclear								*	*	*	*

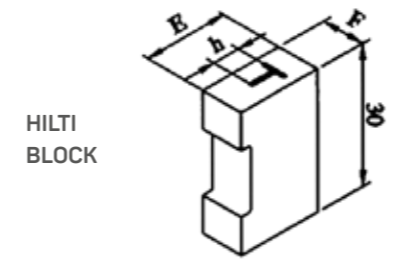
h (mm)	1	1,5	2	2,5	3	4	5	6	8	10	12
A	1,5	1,5	2	2,5	3	4	5	6	8	10	
B	4	4	4	6	6	8	8	10	12	14	
C			5,7	5,7	5,7	5,7					
D			2,5	3	4	4					
E								16	16	16	16
F								8	8	8	8



STANDARD  
BLOCK



CONIC  
BLOCK



HILTI  
BLOCK



STANDARD FONT





# LINEAR TYPEHOLDERS

## FOR IMPACT AND ROLL MARKING

Standard 1, 2 or 3 lines typeholders squared with absolutely precision on the faces to grant the perfect allineament of the types and the best quality in marking. For impact, hot or rolling.



TYPES NUMBER PER LINE

PC h (mm)	2/4	2/4S	3/4	4/4	5/4	11/6	13/6	14/6	28/6	20/8	21/8	22/8	23/8
1-15	9	13	20	33	53								
2	7	10	15	25	40								
2,5						8	16	24	32				
3						6	13	20	26				
4										5	10	15	20
5										4	8	12	16

TYPES NUMBER PER CAVA 2 LINES

h (mm)	PC	6/4	7/4	15/6	15/6S	30/8	24/8	25/8
1-15		20	33					
2		15	25					
2,5				16	32			
3				13	26			
4						10	15	20
5						8	12	16



# CIRCULAR TYPEHOLDERS

## FOR IMPACT

Typeholders for round marking on flat surfaces built on the specific requests of the customer. For impact machines.



TYPES NUMBER PER CAVA 3 LINES

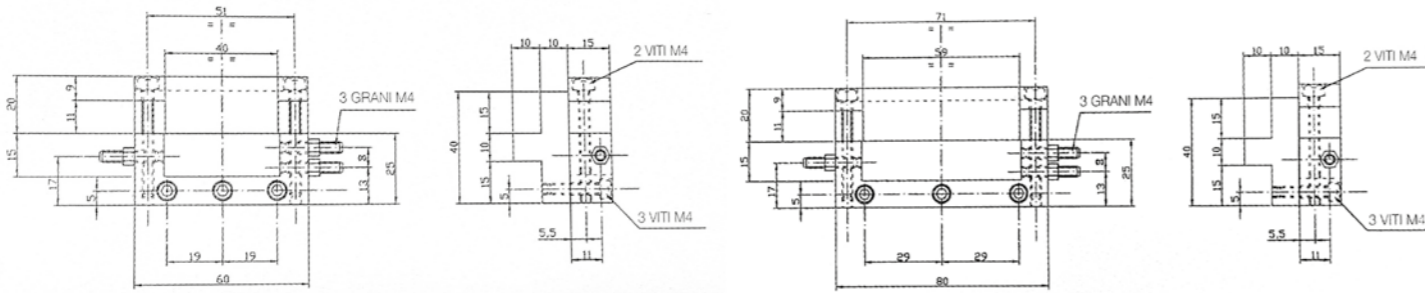
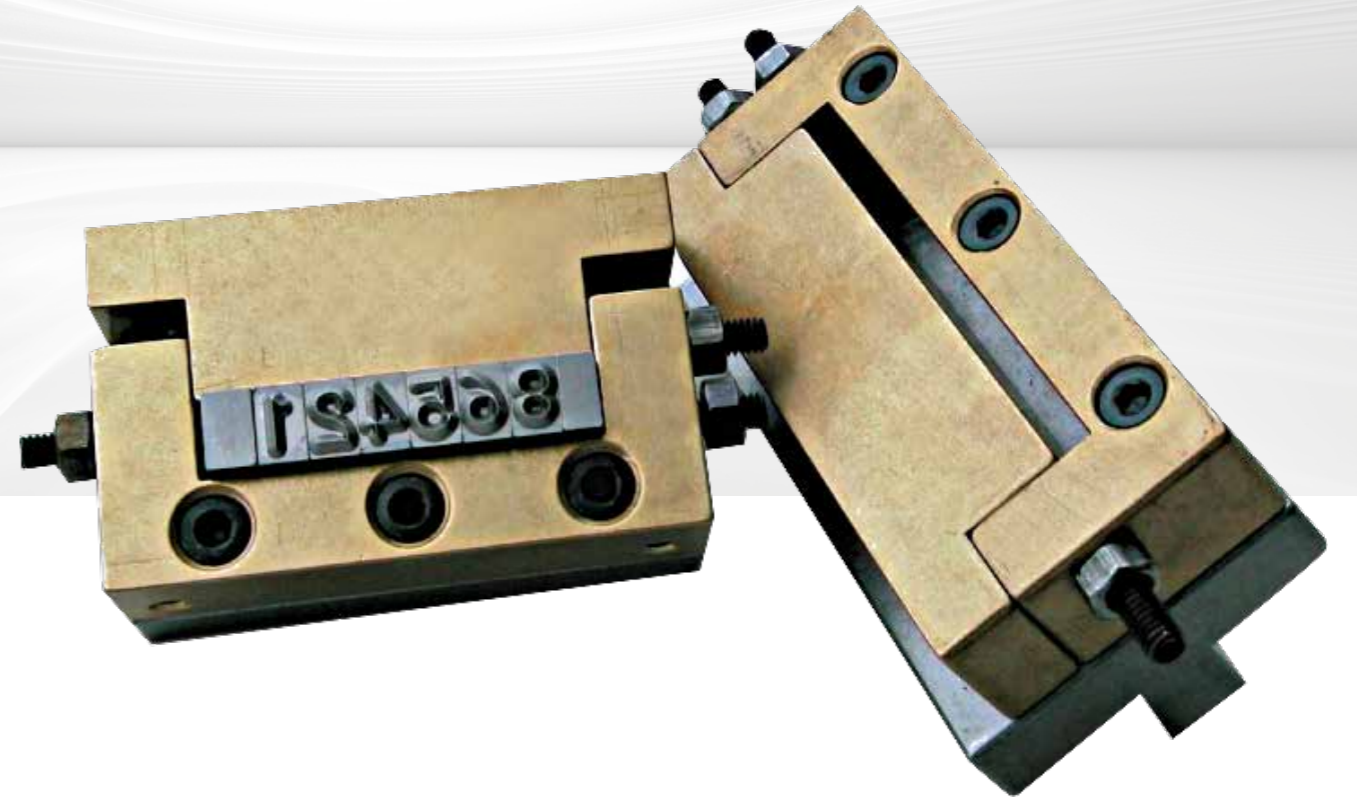
PC h (mm)	9/4	16/6	29/6	17/6	18/6	31/8	26/8	27/8
1-15	26							
2	20							
2,5		16	20	24	32			
3		13	16	20	26			
4						10	12	20
5						8	10	16



# HOT TYPEHOLDERS

## FOR HOT

Typeholders in steel and brass in two models of 65 and 80 mm for multi line of types in any character height.

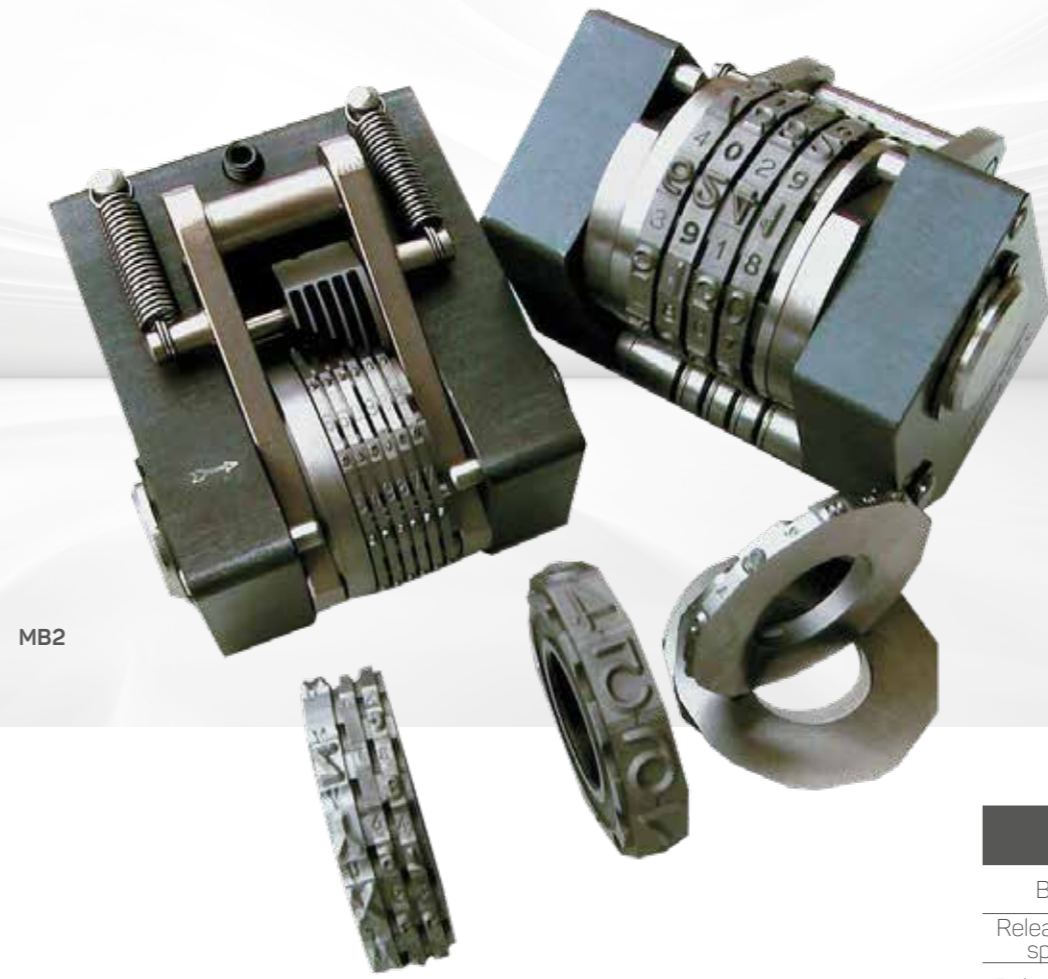


# NUMBERING HEADS

## FOR IMPACT, HOT AND ROLL MARKING

Automatic numbering head MB2 for marking progressive numbers with unit increase each shot.

Engraving of the wheels with numbers, letters, sign and special logos, in standard, half condensed and condensed style. It's possible to mix automatic (B2) and manual (B14) wheels.



MB2

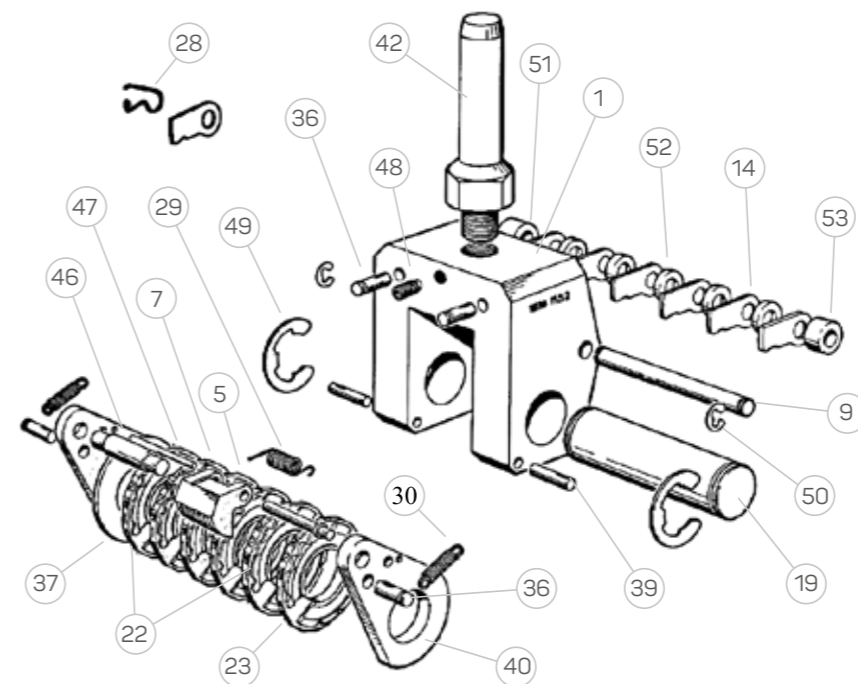
### INCISION HEIGHT (mm)

	Etroit	Demi etroit	Standard	2,5 2	3 2,5 2	4 3 2,5	5 4 3	6 5 4	8 6 5	10 8 6	10 8	10
2				3,7	5	6	7	9	11	13	17	21
3				5,9	8	9,5	11	14	17	20	26	32
4				8,1	11	13	15	19	23	27	35	43
5				10,3	14	16	19	24	29	34	44	54
6				12,5	17	20	23	29	35	41	53	65
7				14,7	20	23,5	27	34	41	48	62	76
8				16,9	23	27	31	39	47	55	71	87
9				19,1	26	30,5	35	44	53	62	80	98
10				21,3	29	34	39	49	59	69	89	109
11				23,5	32	37,5	43	54	65	76	98	120
12				25,7	37	41	47	59	71	83	107	131

More wheels available

Consult the company

	MB2
Body	1
Release level spindle	9
Release lever	14
Wheel spindle	19
Wheel	22
Lever springs	28
Spacing ring	37
Shank	42
Blocking screw	48
Retaining rings	49-0
Spacing ring	51-3
Shaft	5
Pawl	7
Unit	23
Spring	29
Yoke spring	30
Pins	36-9
Yokes	40
Lever rod	46
Spring pin	47

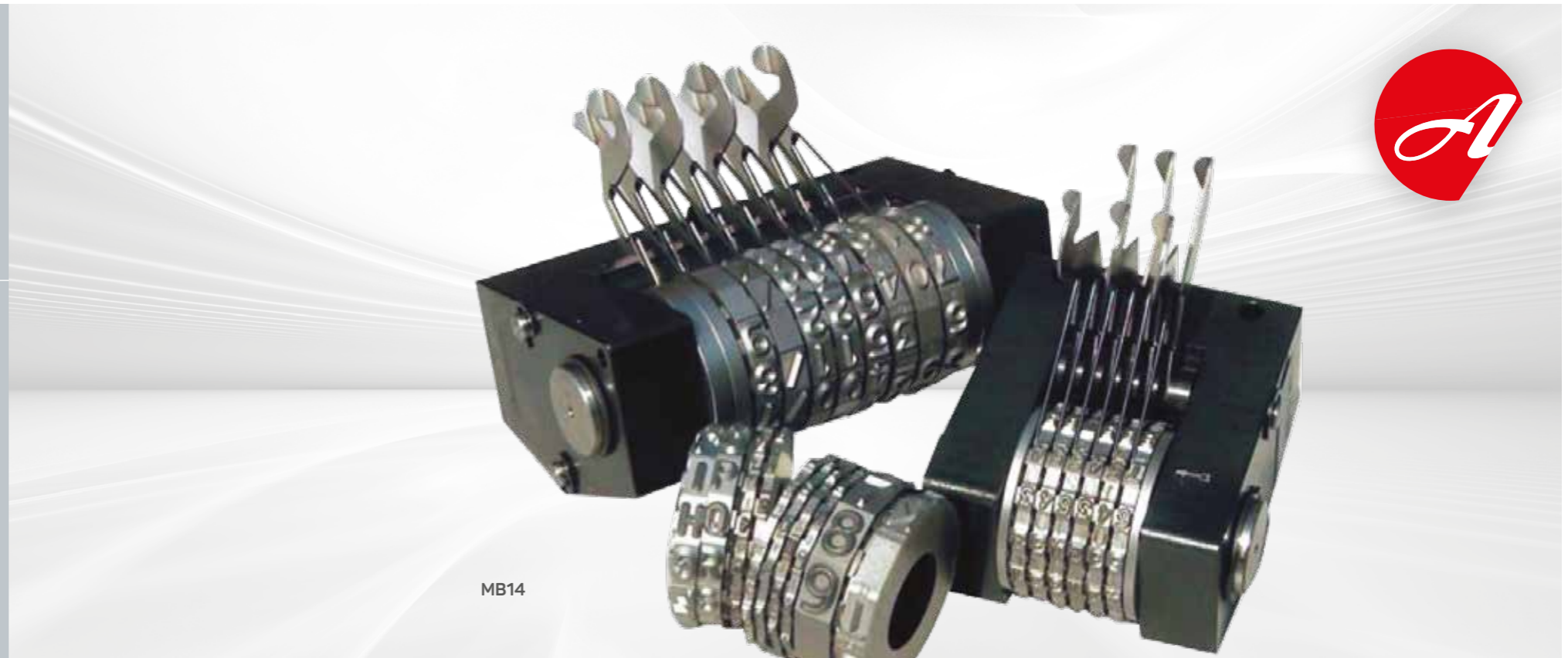


# NUMBERING HEADS

## FOR IMPACT, HOT AND ROLL MARKING

Numbering head MB14 with levers for manual marking of numbers. Engraving of the wheels with numbers, letters, sign and special logos, in standard, half condensed and condensed style.

It's possible to mix automatic (B2) and manual (B14) wheels.



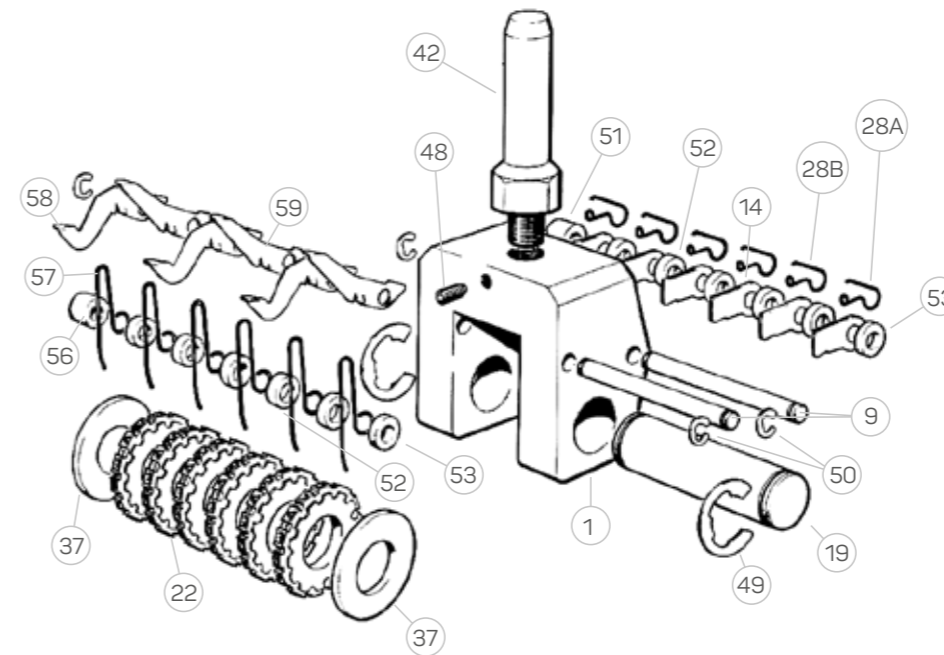
MB14

### INCISION HEIGHT (mm)

Standard	2,5 2 1,5	3 2,5 2	4 3 2,5	5 4 3	6 5 4	8 6 5	10 8 6	10 8
2	4	5	6	7	9	11	13	17
3	6,5	8	9,5	11	14	17	20	26
4	9	11	13	15	19	23	27	35
5	11,5	14	16	19	24	29	34	44
6	14	17	20	23	29	35	41	53
7	16,5	20	23,5	27	34	41	48	62
8	19	23	27	31	39	47	55	71
9	21,5	26	30,5	35	44	53	62	80
10	24	29	34	39	49	59	69	89
11	26,5	32	37,5	43	54	65	76	98
12	29	35	41	47	59	71	83	107

More wheels available

Consult the company



	MB14
Body	1
Release level spindle	9
Release lever	14
Wheel spindle	19
Wheel	22
Lever springs	28
Spacing ring	37
Shank	42
Blocking screw	48
Retaining rings	49-0
Spacing ring	51-3
Medium wheels	56
Control spring	57
Inferior lever	58
Superior lever	59

# NUMBERING HEADS

1,5-2-2,5-3 MM

**For impact.**  
Manual numbering head with wheels up to 3 mm character height.  
Easy regulation of the numbering through pulling shaft.



MB5

# SECURITY BOX

FOR PNEUMATIC MACHINES

Two buttons pneumatic security systems, complete of anti-ripetitive valve according to the CE machines directory.

Two models: Security 1 for impact and presses;  
Security 2 for hot systems thanks to a timer.



SHIELDED  
START  
BUTTONS



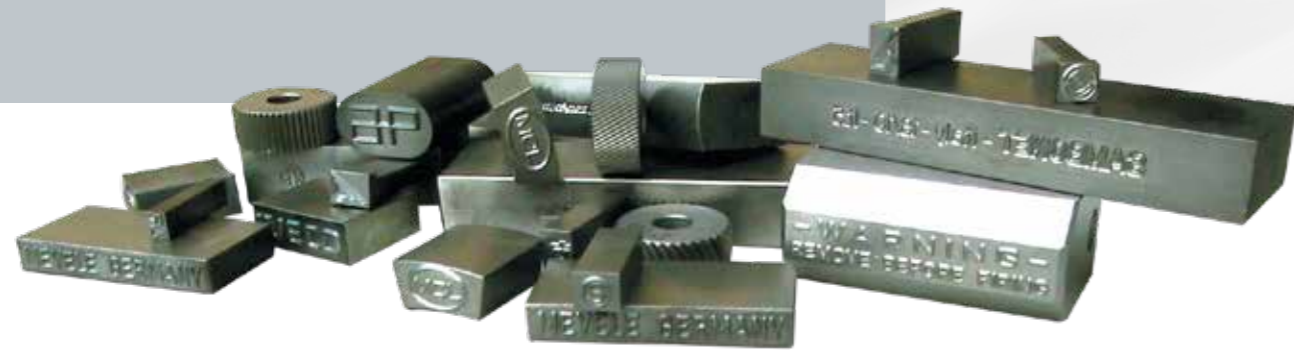
Dimension (mm)	380x200x60
Fluid	filtered air
Pressure (bar)	2-8
Fluid temperature (C*)	-10 / +60

# HEAD STAMPS AND ENGRAVED DIES

## FOR ALL THE MACHINES

Hand punches available in units or set of letters and numbers, in character height from 1 mm to 12 mm standard, mirror or nuclear.

Special dies in hardened steel in any shape and engraving to reproduce perfectly logos and drawings.

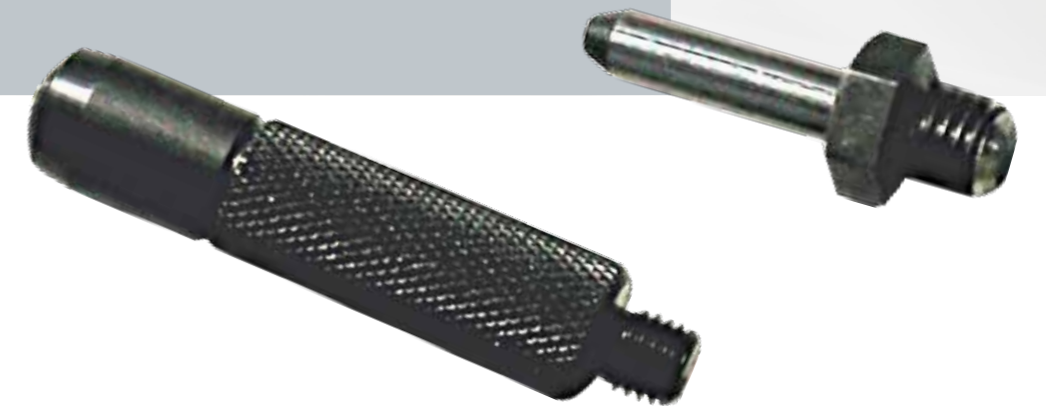


# SHANKS

## FOR IMPACT

Shanks are the natural union between cliché, punches, type holders, numbering heads and marking machines.

Available in various sizes depending on the different models.



Ø 6 - 8 mm  
MB15-19-19VPN



Ø 10 mm  
MB20-21-21VP



Ø 16 mm  
MB32-35-35VP



Ø 20 mm  
a mano - hand - manual



# DOVE TAILS

## FOR ROLL MARKING

Perfect coupling between rolling machine and typeholders or numbering heads.



MB76EPV  
MB76EP90°

MB71E  
MB71N  
MB71CE

MB41N  
MB41E

# TABLES

## FOR ALL MACHINES



MOD. T



MOD. TG

	MOD. T	MOD. TG
Dimension (mm)	600x600 h 830	600x600 h max 750
Shelf (mm)	600x600 h 40	600x600 h 40
Machines	MB32-41	MB15-19-20-21-32-35-41-71



# SUPPORTS

## FOR ROLL MARKING

Holding supports:  
S1 for round and cave components;  
S2 for round parts hold from the external.



S1R MINION



S2R MINION



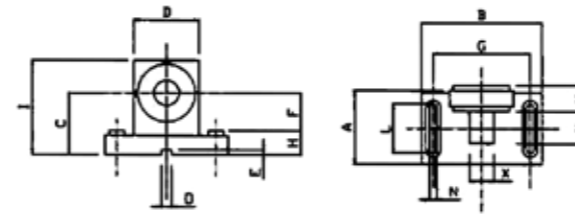
S2R MINION  
EXTENSIBLE



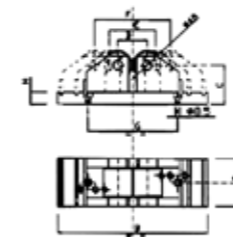
S1R



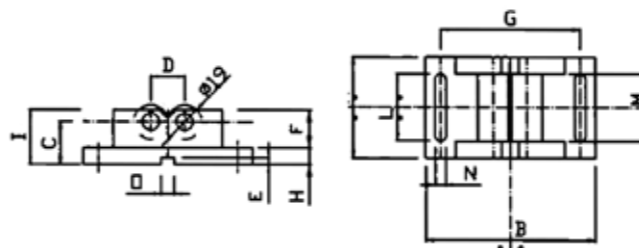
S2R  
EXTENSIBLE



S1RM/S1R



S2RM



S2RE

	S1RM MB41 - MB71	S2RM MB41 - MB71	S1R MB41 - MB71	S2RE MB71
A	60	60	89	80
B	100	100	175	250
C	51	25	74	62
D	52	20,2	75	44
E	4	4	-	59
F	33	39,5	48	58
G	80	80	139,5	237
H	17	10	26	20
I	75	32	109	-
L	40	40	62	-
M	30	40	52	-
N	6,5	6,5	8	11
X/Y	20+optional	-	20+optional	-
Ø	-	19	-	48

# SUPPORTS

## FOR ROLL MARKING ON FLAT SURFACES

SR100 support for circular special dies and conical typeholders.

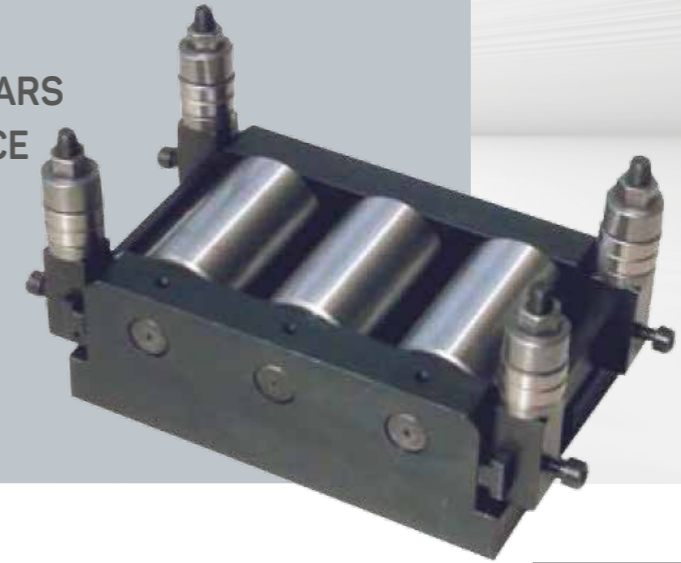


SR100

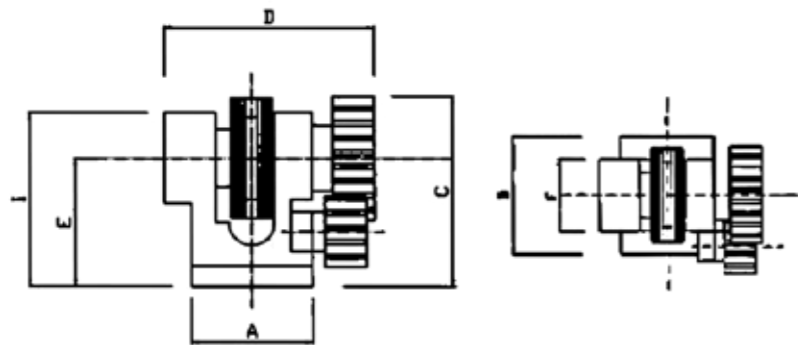
# SUPPORTS

## FOR EXAGONAL/SQUARE BARS TO BE MARKED WITH MB71CE

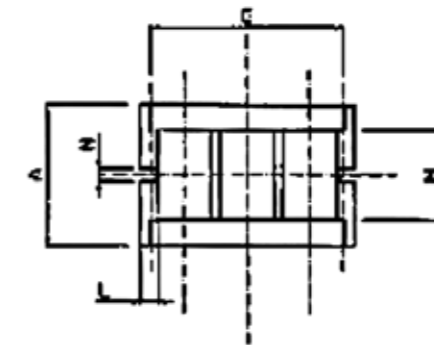
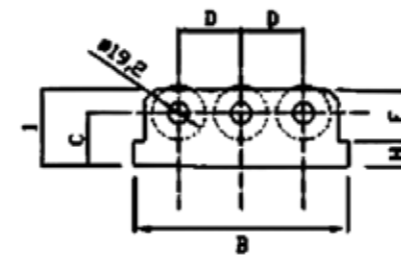
SR3 support with 3 rolls or 2 rolls and a central special die.



S3R



	SR100 MB71
A	58
B	73
C	92
D	97
E	67
F	43
G	-
H	-
I	83
L	-
M	-
N	-
O	-
Ø	-



	S3R MB71CE
A	110
B	170
C	42
D	49
E	-
F	40
G	150
H	20
I	60
L	15
M	70
N	10
O	8
Ø	42

# E1030 E1250

Chem-Etch machine kit, cost effective, for good contrast in marking conductive metals. In a small box, there are 1 hand stamp 20x40mm and the electrolytic unit; 100 blank stencils 75x56mm and a contact plate with cables and 2 liquids.

Two models available, different in the power, from 30VA for 1030 to 60VA for E1250, and in the output, adjustable from 6 to 12V for E1250.

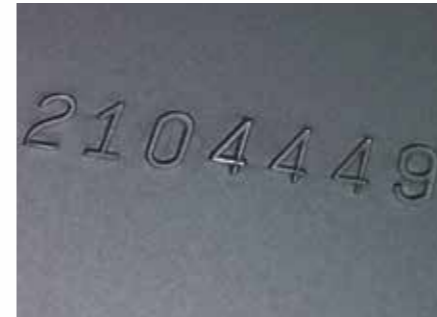


**IT'S EASY EVEN FOR CREATING MASKS OR STENCILS, USING THE BENCH OF A PC - CONNECTING LABELLING MACHINE.**

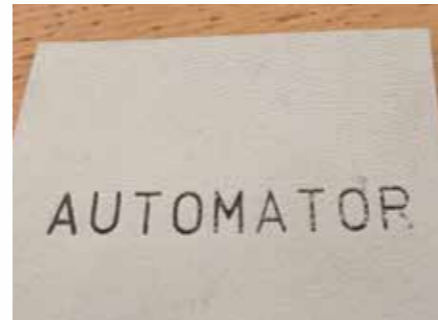
- Two different chem-etching solutions
- A wide range of liquids for different materials reactions
- Custom-made stencils on request



# MARKINGS ON ALL SURFACES









**Automator Marking Systems Srl**

20094 Corsico (Milano) - Italy  
Via Meucci, 8  
Tel. +39 02 48601445  
Fax +39 02 48601503

[www.automator.com](http://www.automator.com)

